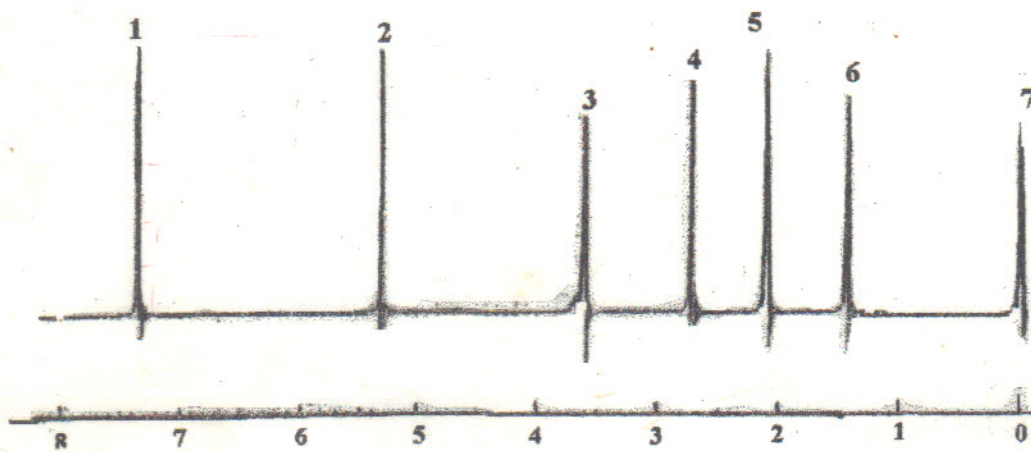


Faculté des S.E.I

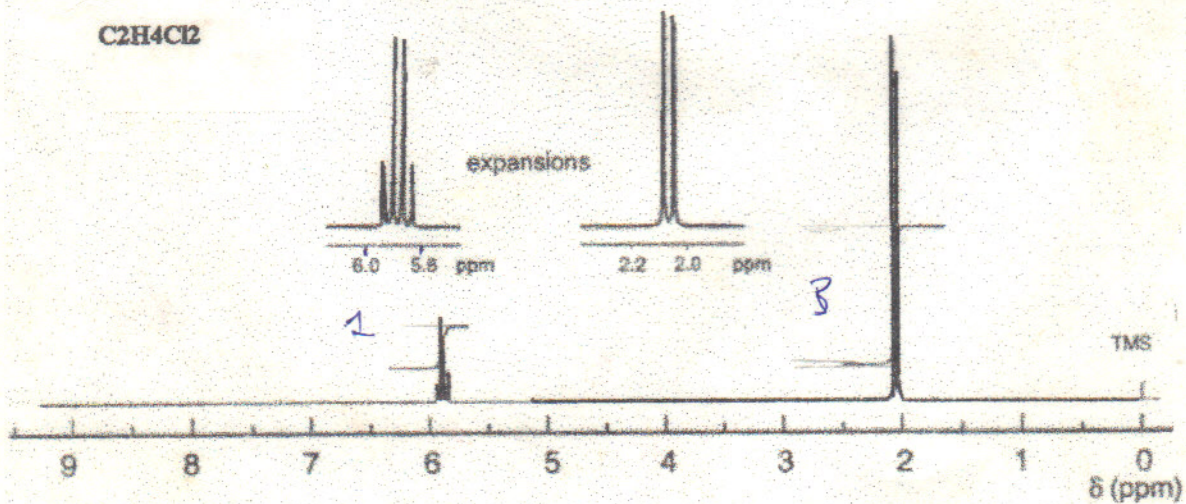
Département de Chimie

3^{ème} année
Chimie Analytique

SERIE DE TD N°04
Spectroscopie RMN-¹H

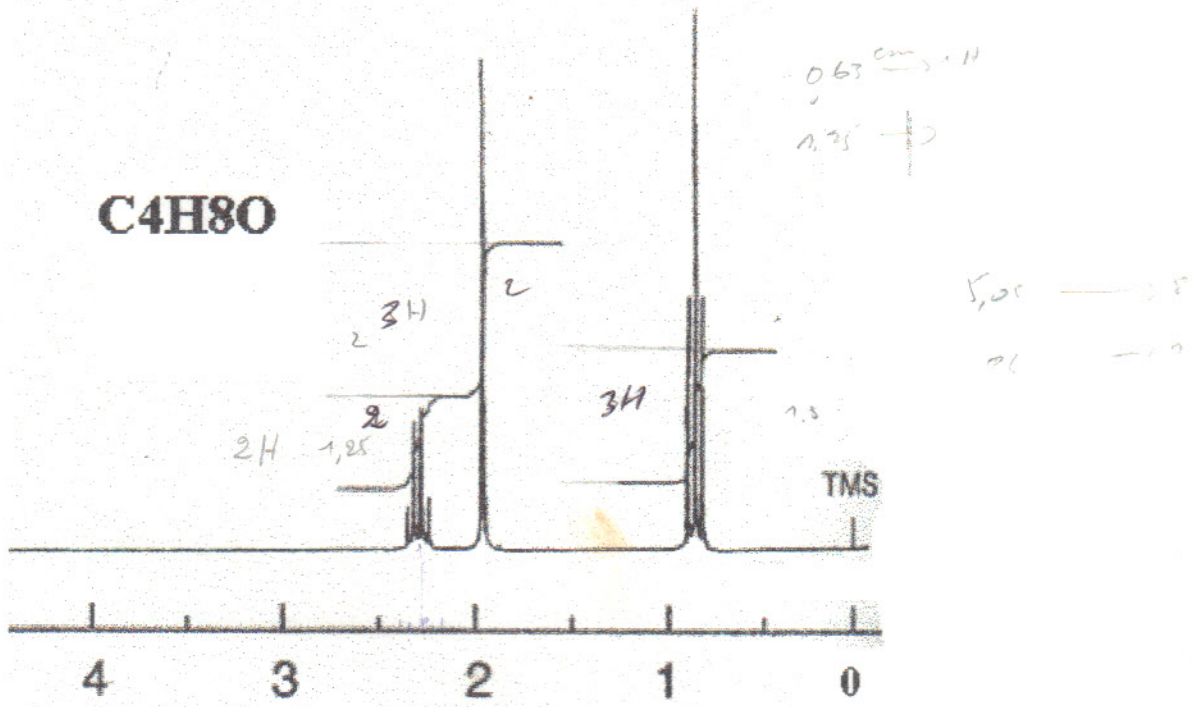


Attribuer à chacun des composés suivants le pic qui lui correspond dans le spectre ci-dessus : dioxane, CH_3CCl_3 , dichloromethane, hexane, acétone, chloroforme, tetramethylsilane.



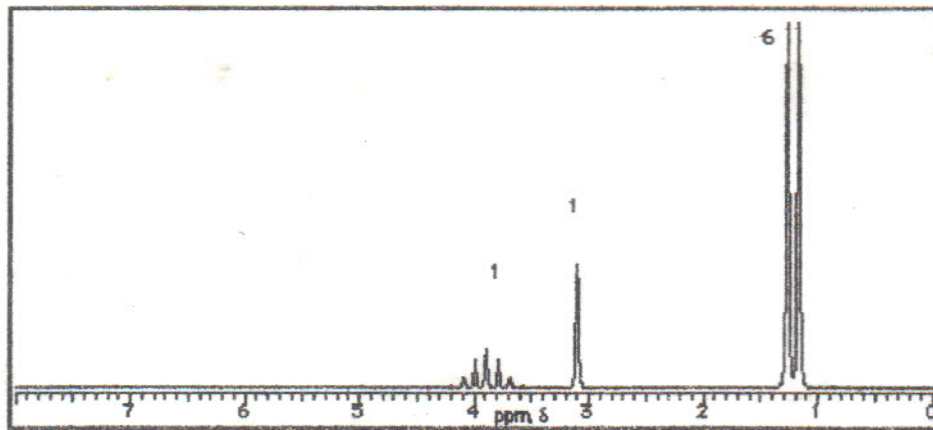
6.8
6.07

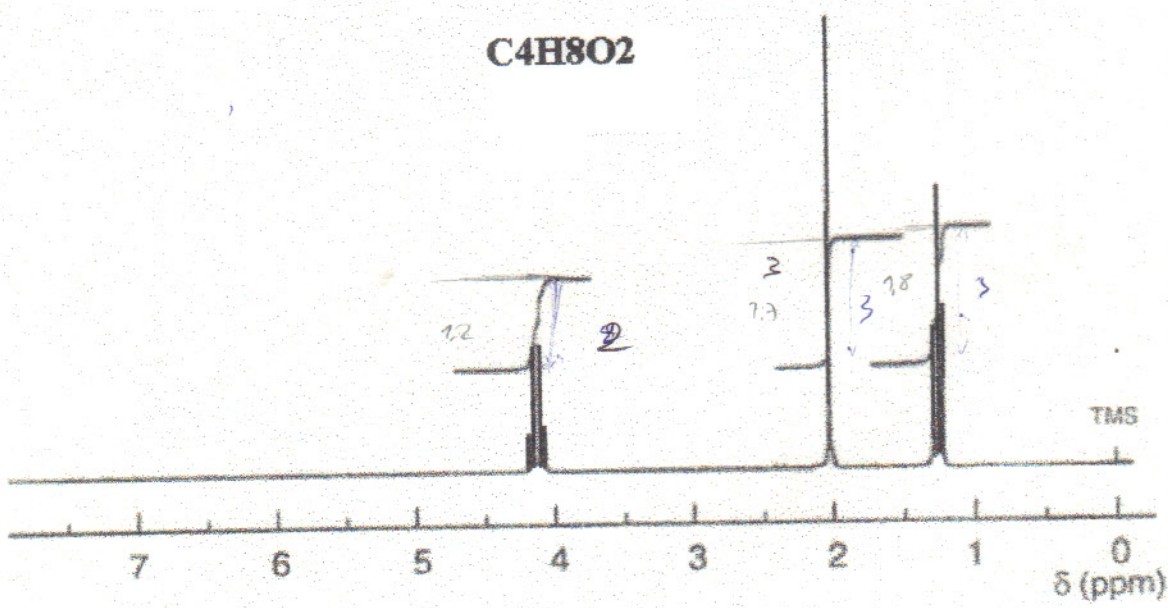
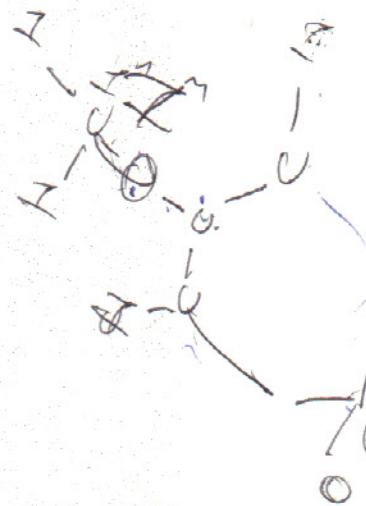
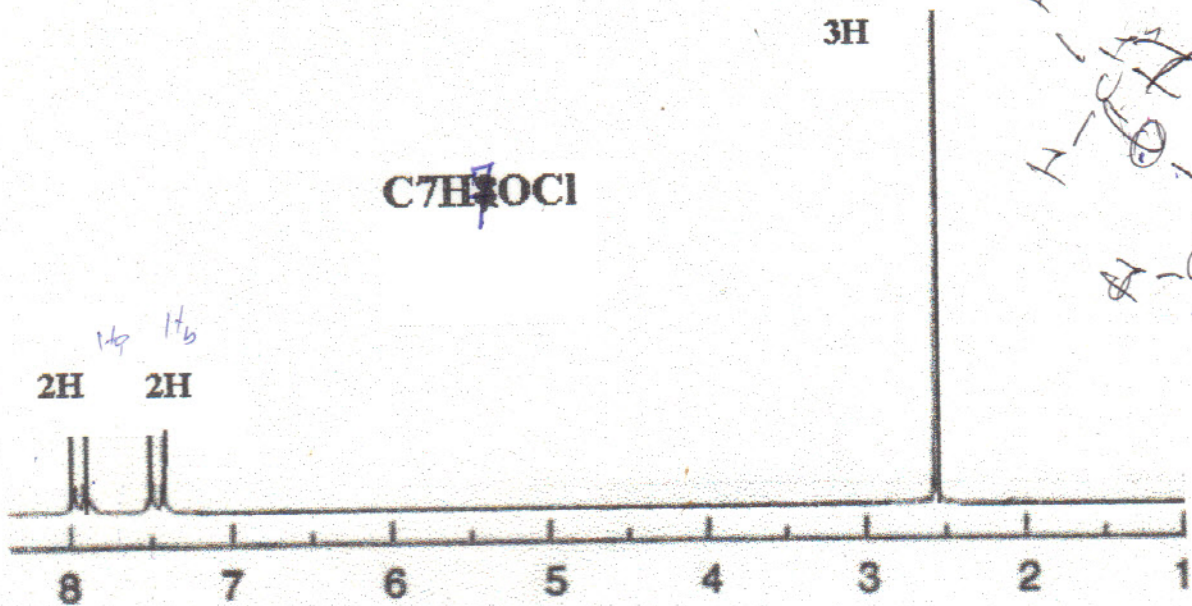
3:10



w=

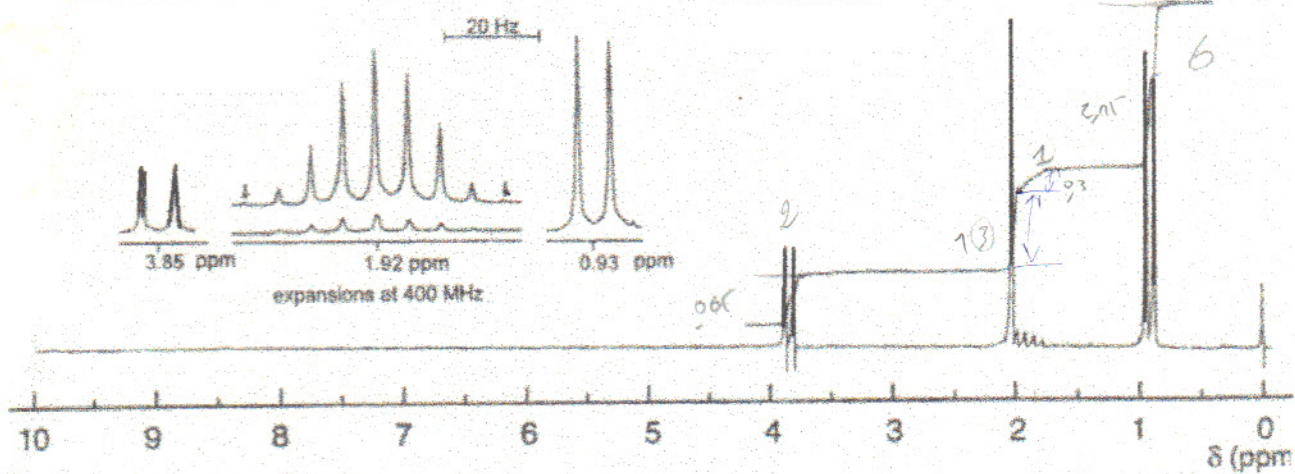
C₃H₈O



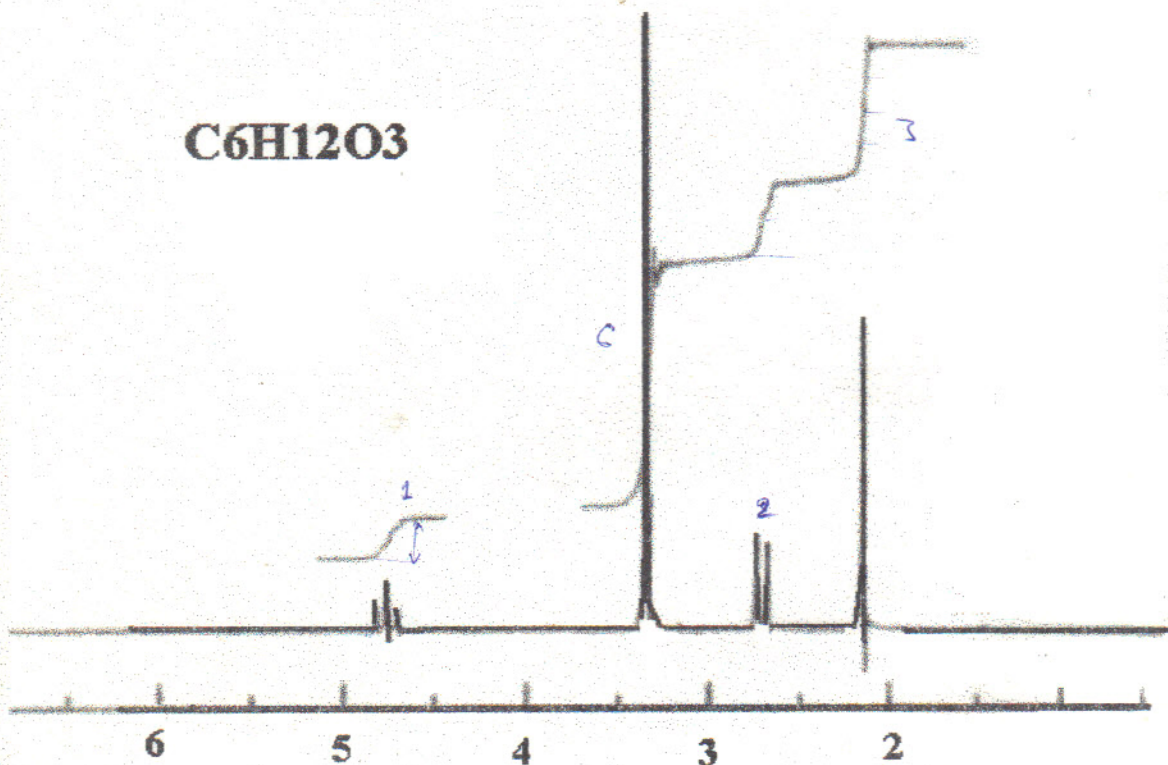


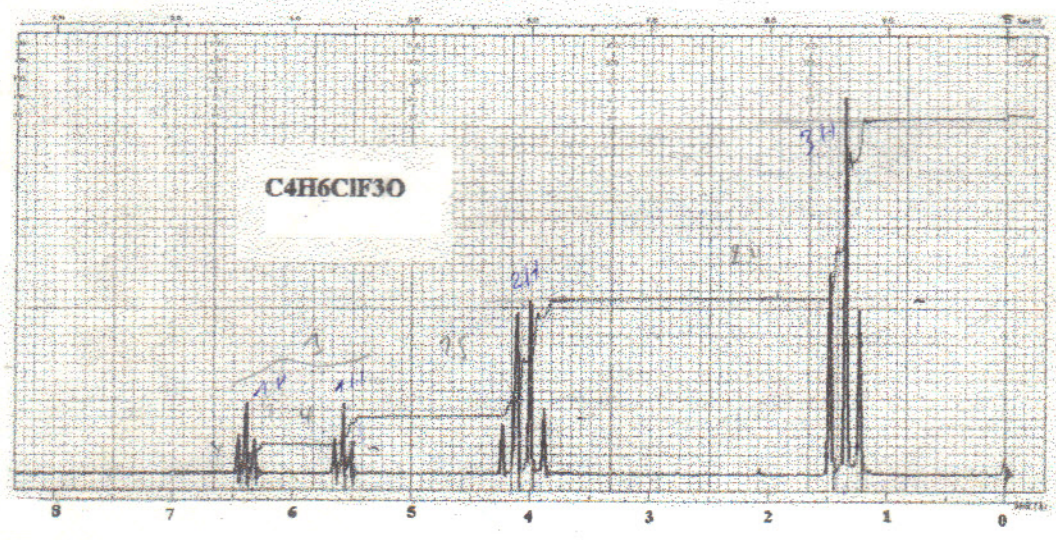
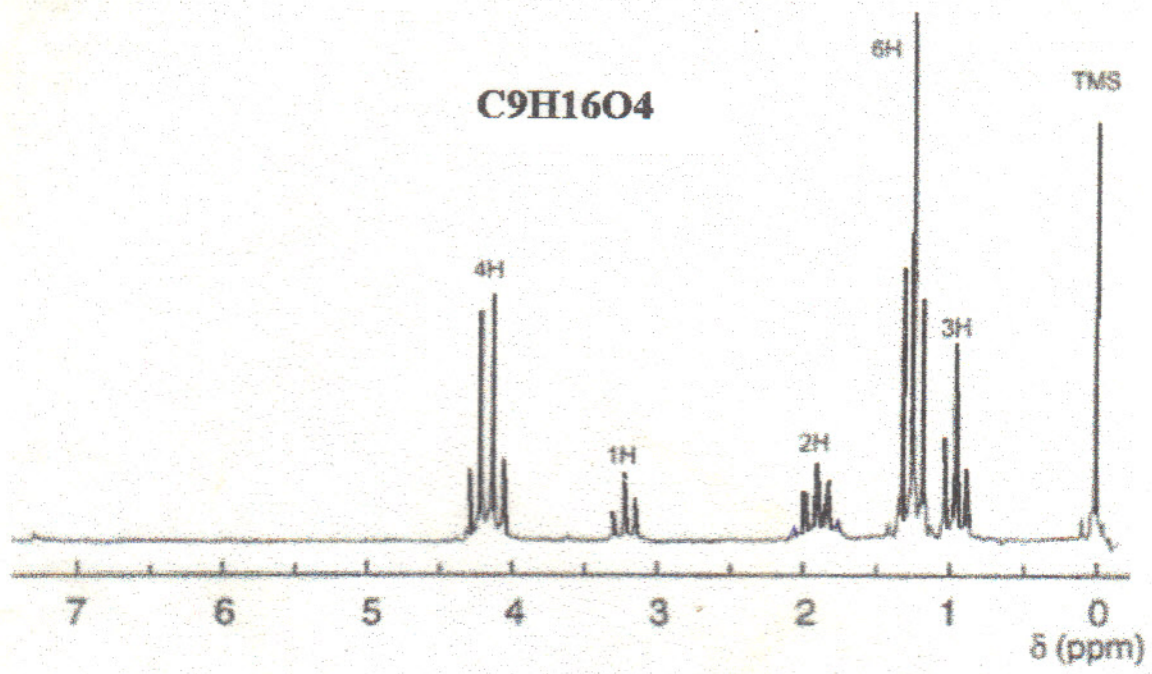
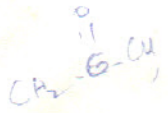
spectre rmn 1H
100 MHz-CDCl3

C6H12O2

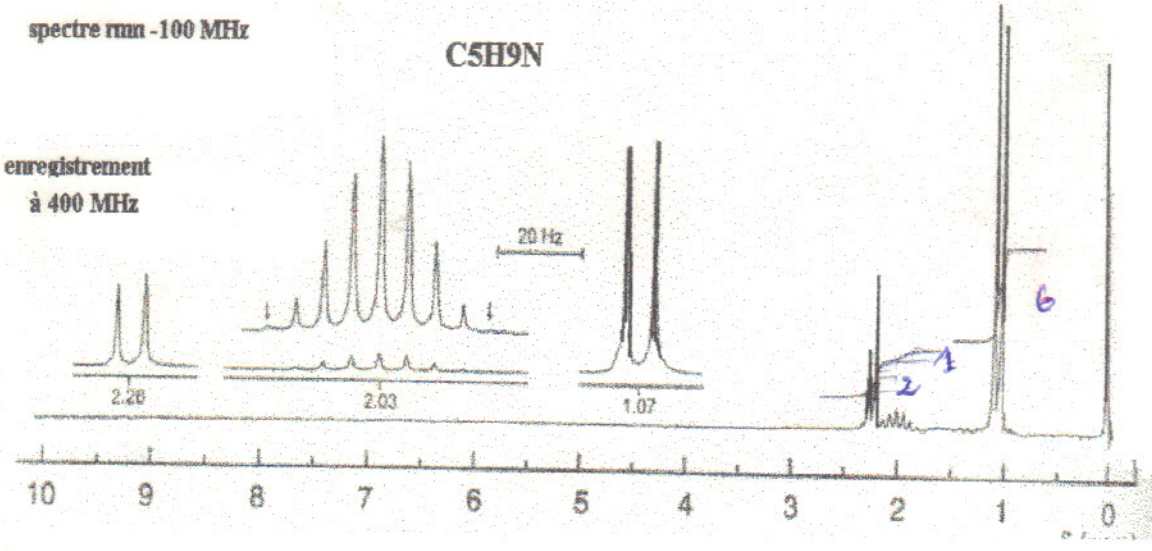
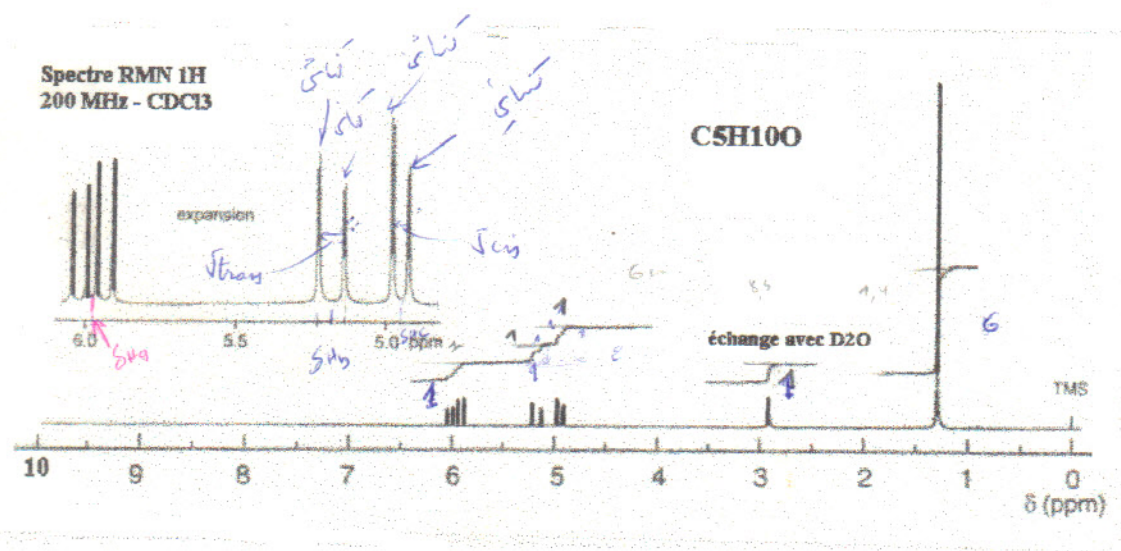


C6H12O3

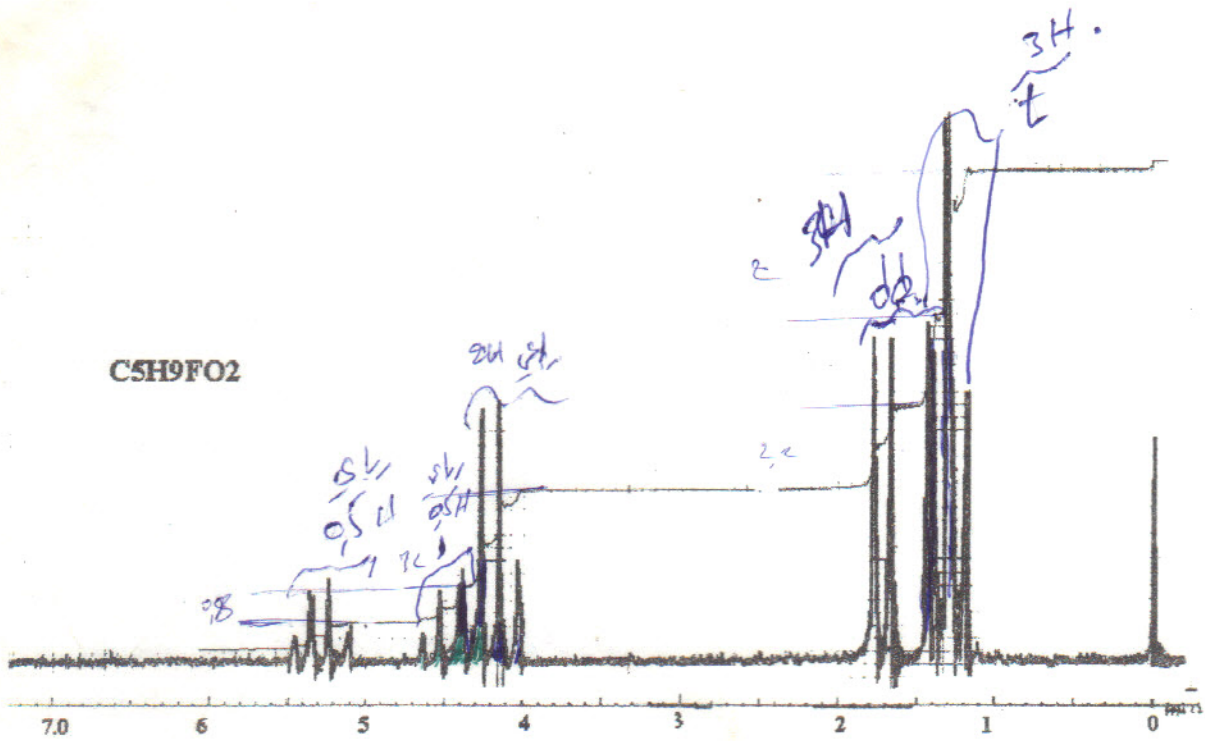




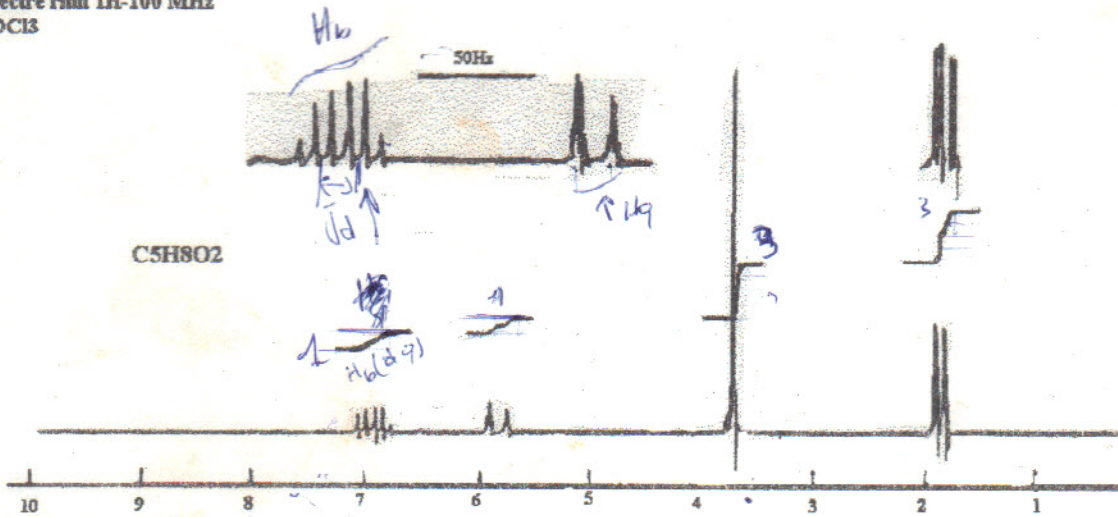
7



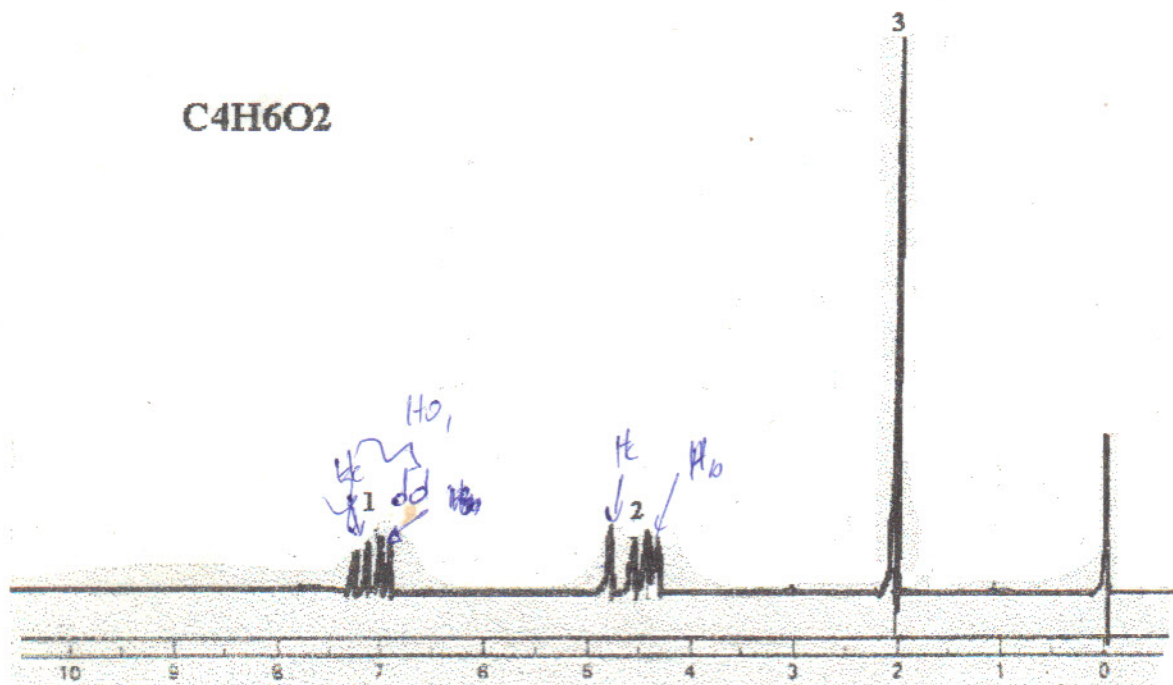
C5H9FO2



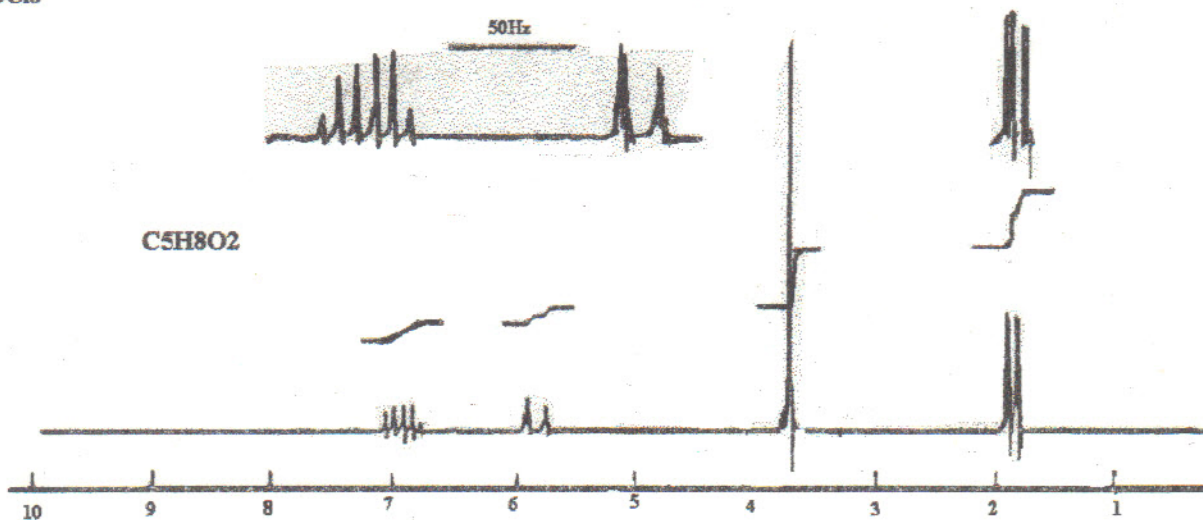
Spectre run 1H-100 MHz
CDCl3



C4H6O2



Spectre rnm 1H-100 MHz
CDCl3

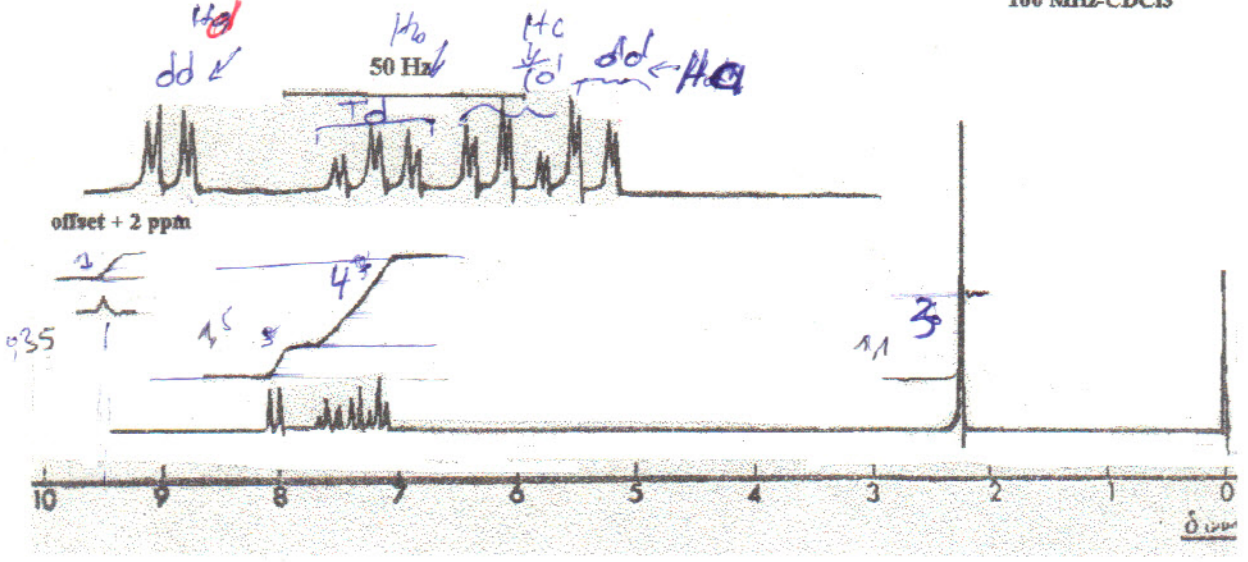


101



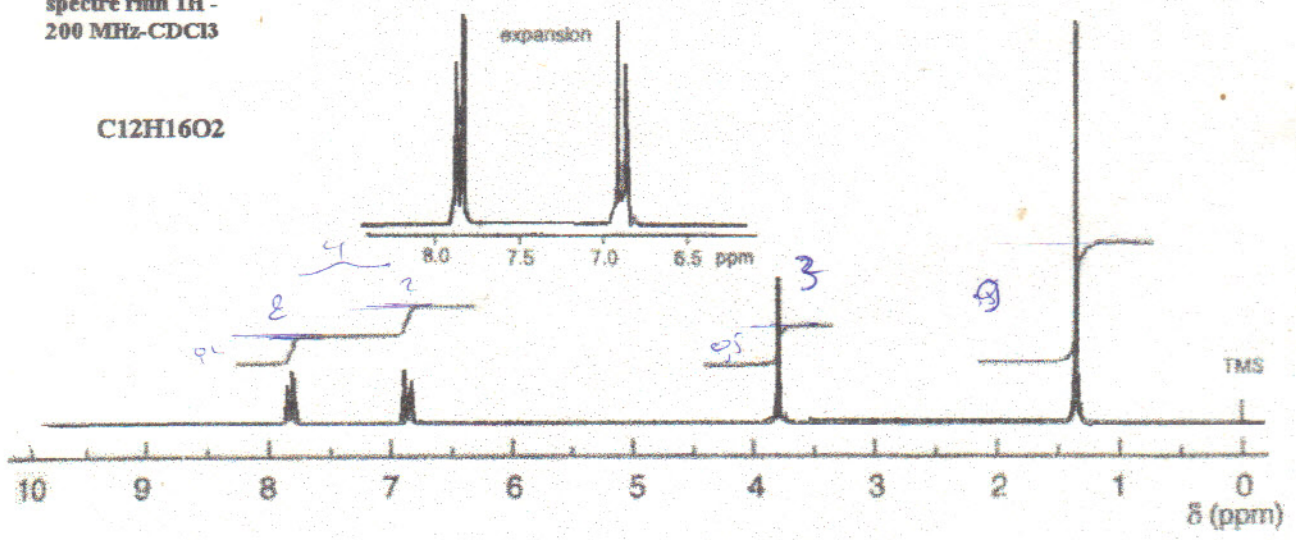
C₉H₈O₄

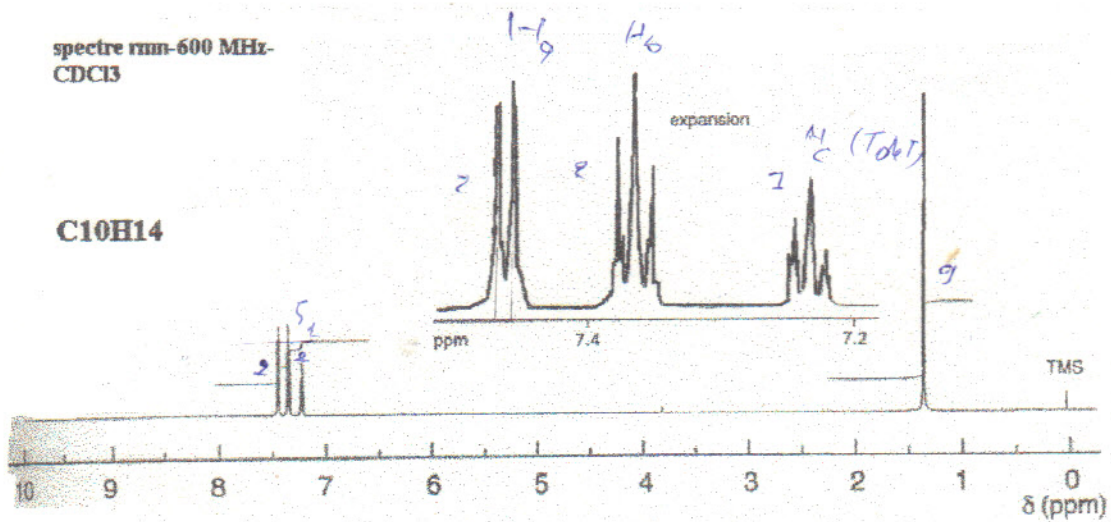
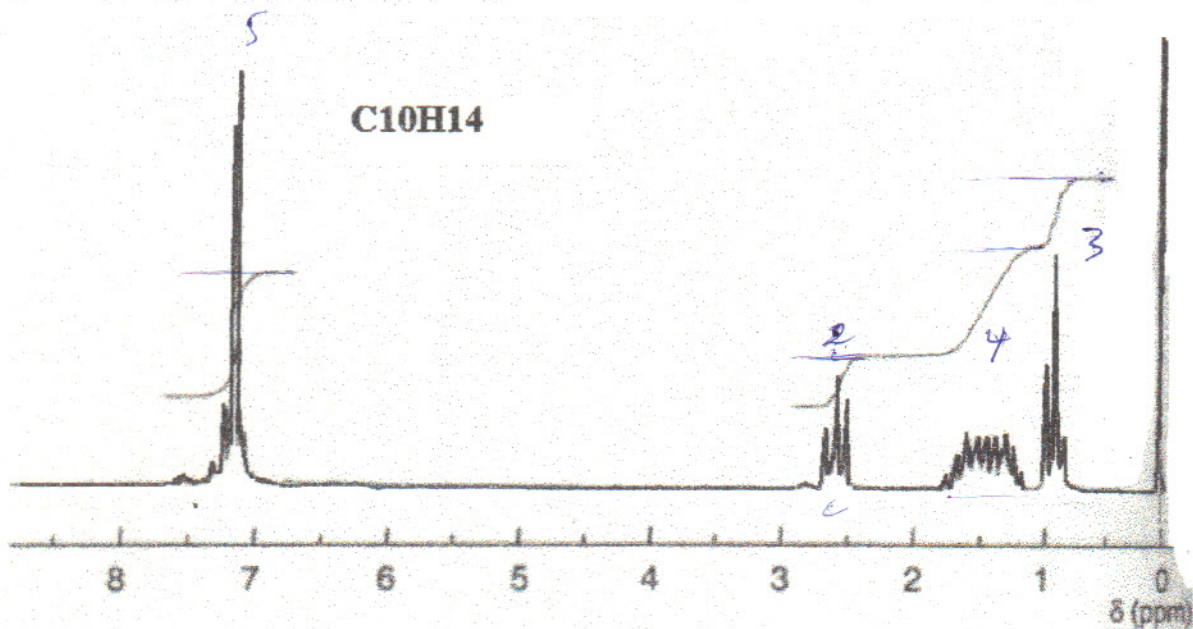
spectre rnm 1H
100 MHz-CDCl₃



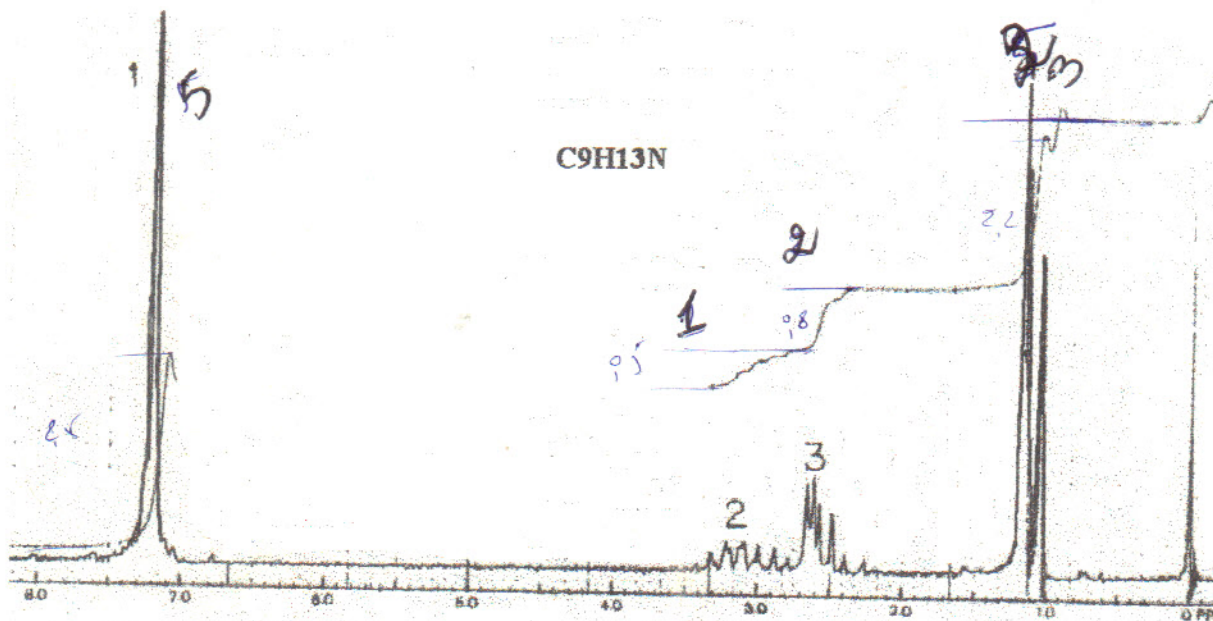
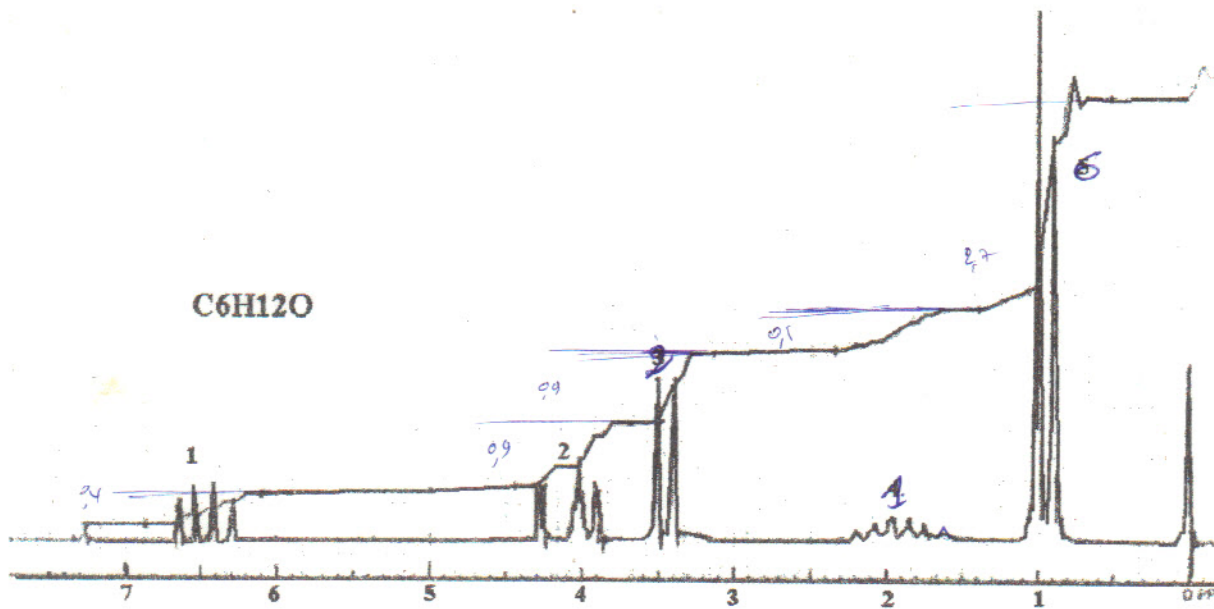
spectre rnm 1H -
200 MHz-CDCl₃

C₁₂H₁₆O₂





12



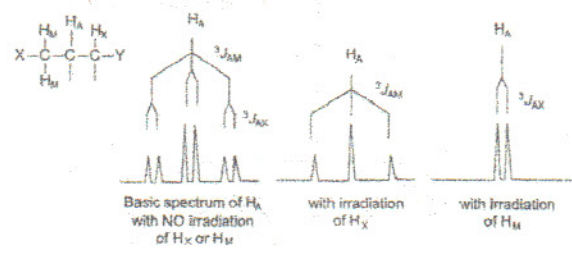
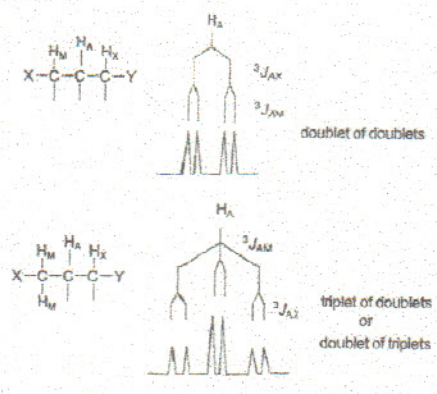


Figure 5.7 SELECTIVE DECOUPLING IN A SIMPLE 4-SPIN SYSTEM

noyau A dans un système AMX et AM₂X

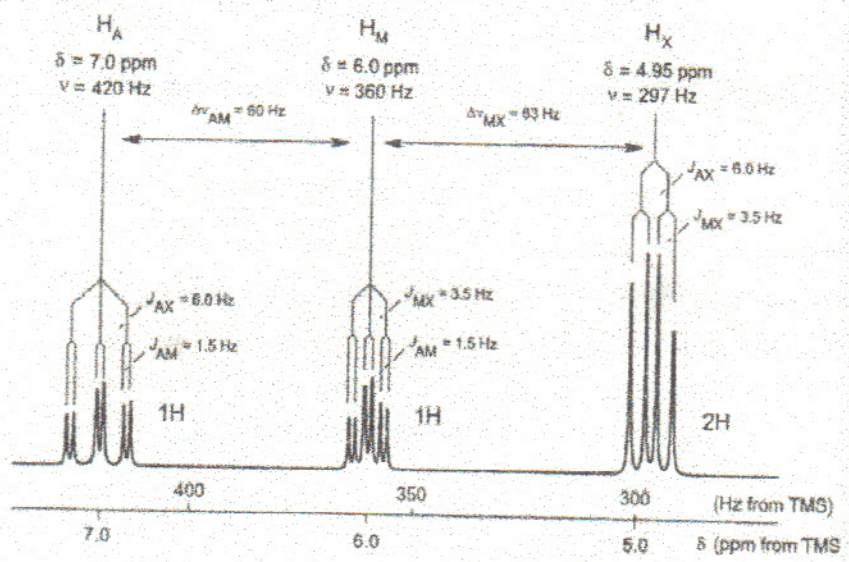
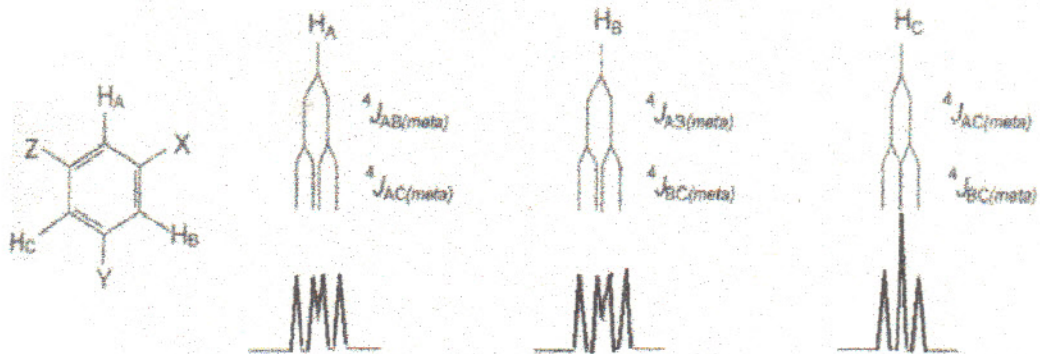
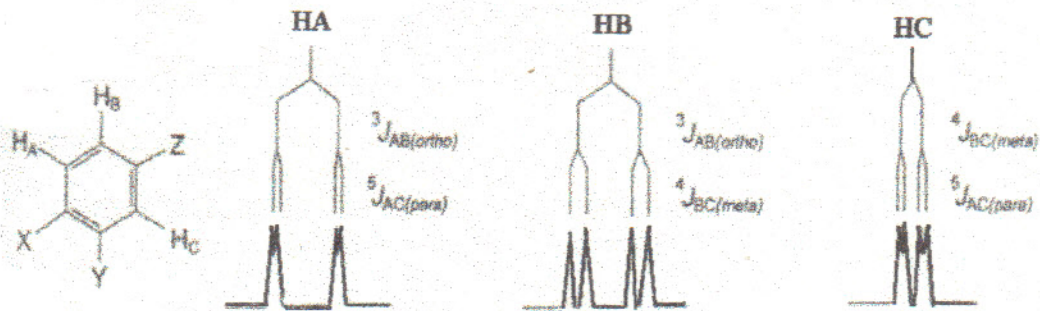
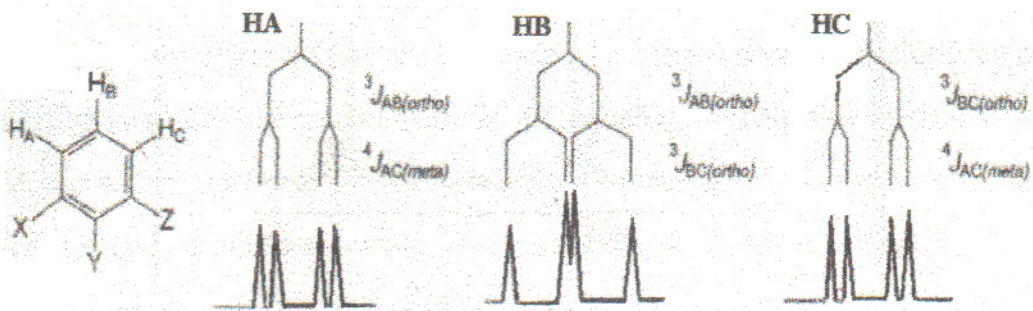
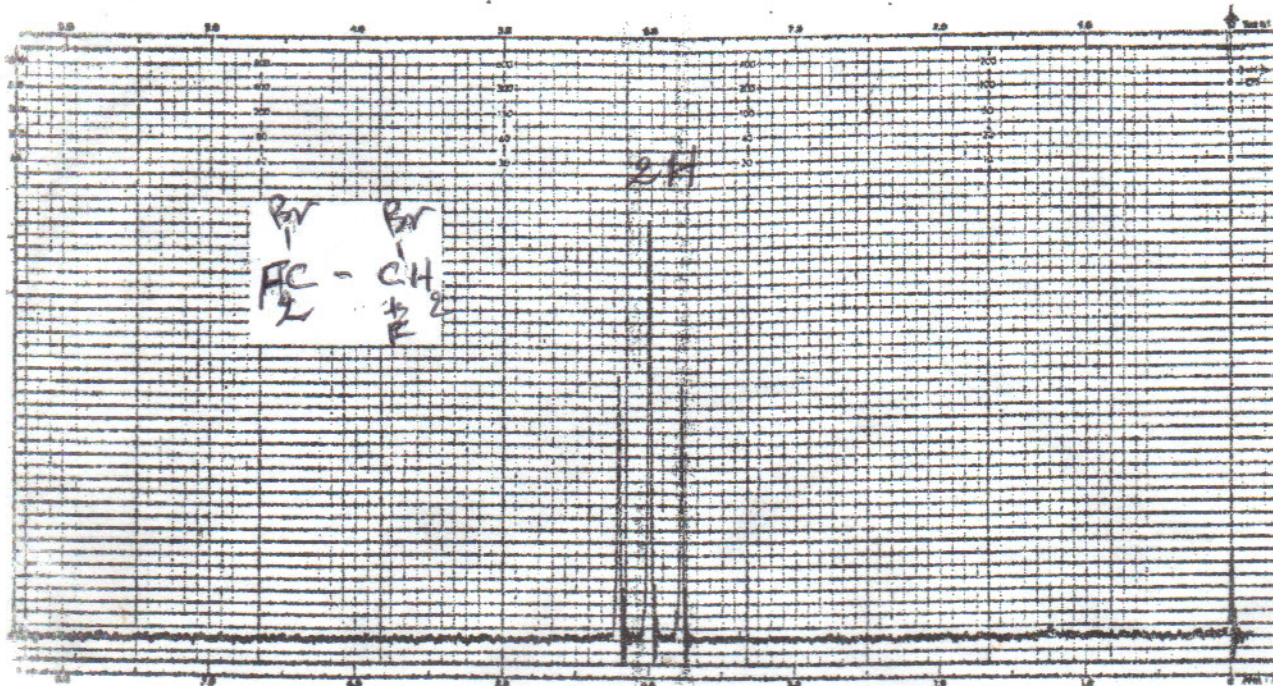
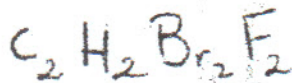


Figure 5.5 THE 60 MHz ¹H SPECTRUM OF A 4-SPIN AMX₂ SPIN SYSTEM

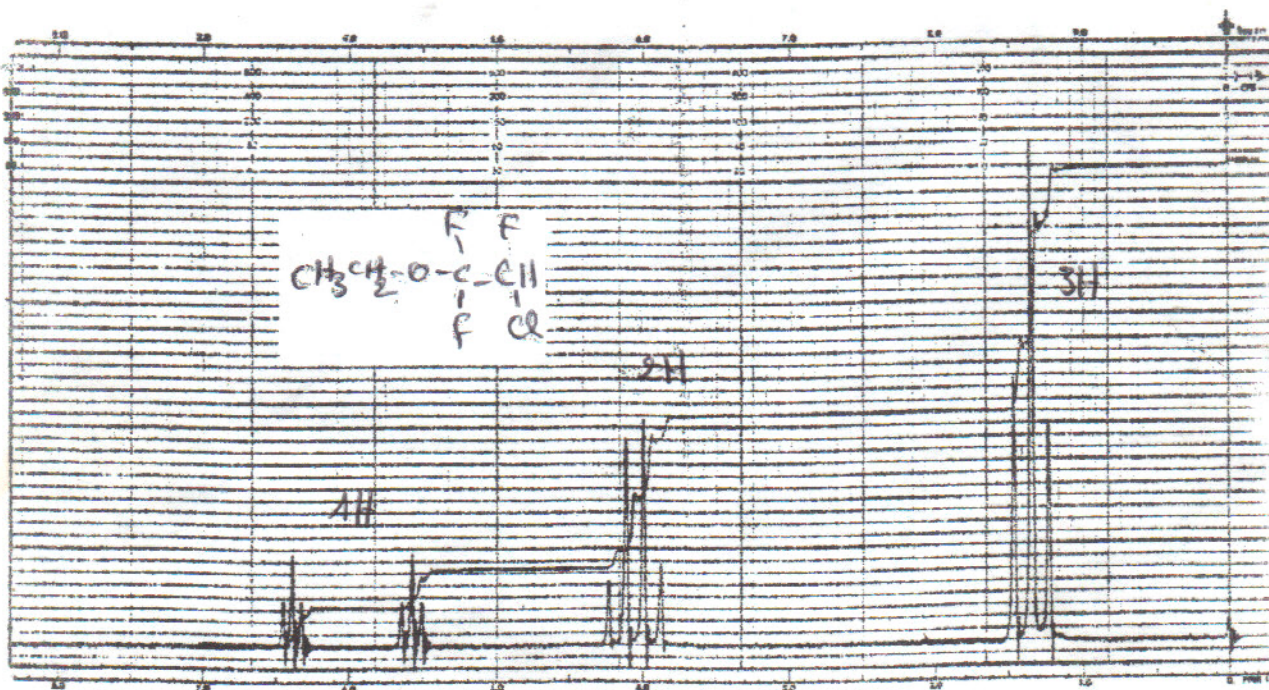
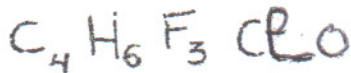
14



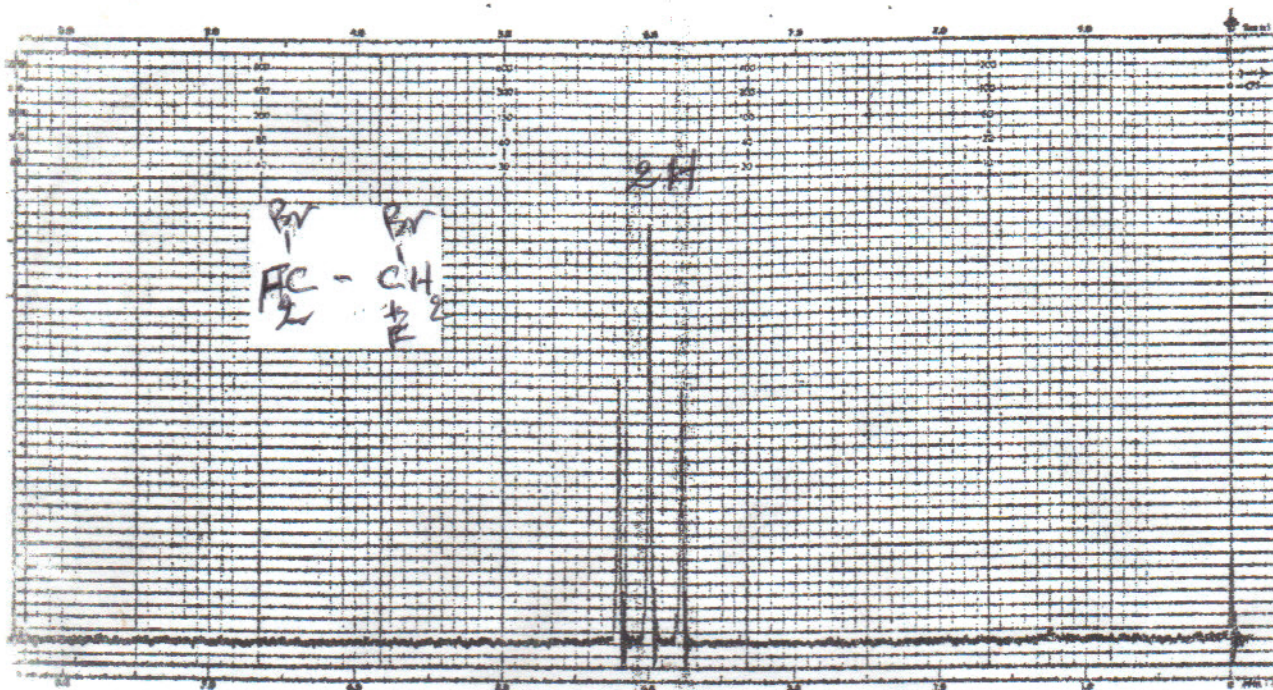
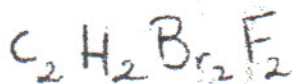
Spektre 23



Spektre 24



Spektrum 23



Spektrum 24

